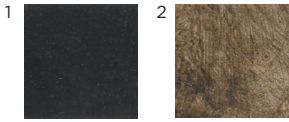


PORTA ROMANA



3, French Brass with Warm Grey satin shades

MCL51 NEPTUNE CHANDELIER

TOTAL DROP 63" 1600mm
(including ceiling canopy, 1 meter of chain and fixture)
MINIMUM DROP 25 1/4" 640mm
(including ceiling canopy, minimum amount of chain possible and fixture)

CANOPY DIMENSIONS
Diameter 4 1/2" (115mm) x Depth 3/4" (20mm)
39 1/4" (1 meter) chain included

Technical data sheet available

FINISHES
1 Bronzed/2 Burnt Silver/3 French Brass
Custom finishes available

DESIGNER'S NOTE
Also available in round, 8 arm, 56"/1420mm diameter version

© Porta Romana Limited

CONSTRUCTED FROM
Steel with decorative finish

NET WEIGHT 23 1/4 lb 10.5kg

LAMPSHADE 8 x 5" Cylinders
5" x 5" x 8"
MAX WATTAGE 8 x 25W

LAMPING Eight, Torpedo Type B10,
Candelabra Base
VOLTAGE 120 V
CORD Braided silk in charcoal
(bronzed/silver) or gold (brass)

UL/CUL LISTED

REQUIRES DEDICATED CARRIER
REQUIRES CRATE FOR ALL OVERSEAS DESTINATIONS